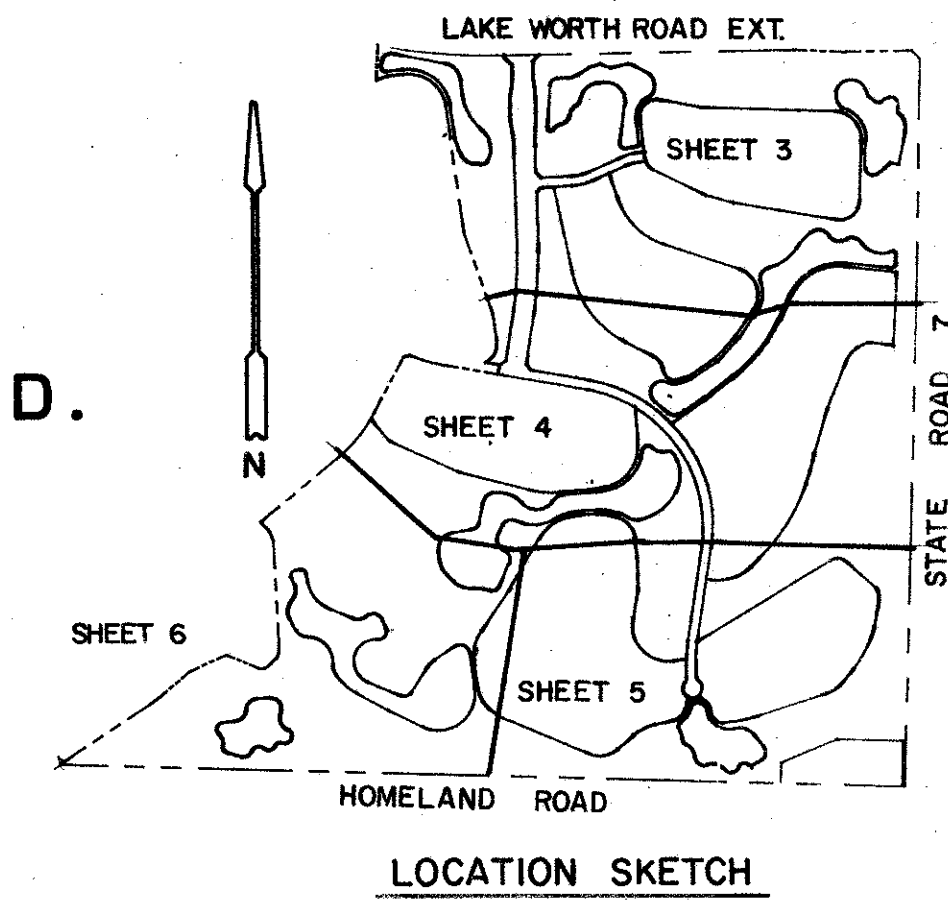


WYCLIFFE PLAT ONE

PART OF WYCLIFFE GOLF AND COUNTRY CLUB (FORMERLY KNOWN AS SUNDIAL COUNTRY CLUB), P.U.D.
SITUATE IN SECTION 25, TOWNSHIP 44 SOUTH, RANGE 41 EAST,
PALM BEACH COUNTY, FLORIDA

JANUARY, 1989

SHEET 1 OF 6



8

STATE OF FLORIDA
COUNTY OF PALM BEACH

THIS PLAT WAS FILED FOR RECORD
ON 9:49 AM
THIS 9 DAY OF FEB
AD, 1989 AND DULY RECORDED
IN PLAT BOOK 62 ON PAGES
8 AND 13

JOHN B. DUNKLE, CLERK
BY *Barbara A. Wood*, D.C.

DEDICATION

KNOW ALL MEN BY THESE PRESENTS THAT, SUNDIAL JOINT VENTURE, A FLORIDA GENERAL PARTNERSHIP, OWNERS OF THE LAND SHOWN HEREON AS "WYCLIFFE PLAT ONE", SITUATE IN SECTION 25, TOWNSHIP 44 SOUTH, RANGE 41 EAST, PALM BEACH COUNTY, FLORIDA, BEING MORE PARTICULARLY DESCRIBED AS FOLLOWS:

COMMENCING AT THE SOUTHEAST CORNER OF SAID SECTION 25, THENCE N01°35'29"E ALONG THE EAST LINE OF SAID SECTION 25, A DISTANCE OF 154.89 FEET; THENCE DEPARTING FROM SAID SECTION LINE, N88°24'31"W AND PERPENDICULAR TO THE PRECEDING COURSE, A DISTANCE OF 180.75 FEET TO THE INTERSECTION OF THE WEST RIGHT-OF-WAY LINE FOR AN ULTIMATE 200 FOOT WIDE RIGHT-OF-WAY FOR STATE ROAD 7 AS RECORDED IN OFFICIAL RECORD BOOK 5642 AT PAGE 1510 AND THE NORTH RIGHT-OF-WAY LINE OF AN 80 FOOT RIGHT-OF-WAY FOR HOMELAND ROAD AS RECORDED IN OFFICIAL RECORD BOOK 5642 AT PAGE 1591, SAID POINT ALSO BEING THE POINT OF BEGINNING.

FROM THE POINT OF BEGINNING, THENCE CONTINUE N88°26'38"W ALONG SAID NORTH RIGHT-OF-WAY LINE FOR HOMELAND ROAD, A DISTANCE OF 2457.23 FEET; THENCE N88°26'28"W AND CONTINUING ALONG SAID NORTH RIGHT-OF-WAY LINE, A DISTANCE OF 1899.93 FEET; THENCE DEPARTING FROM SAID NORTH RIGHT-OF-WAY LINE, N66°01'50"E A DISTANCE OF 558.56 FEET; THENCE N52°48'11"E A DISTANCE OF 60.61 FEET; THENCE N49°27'47"E A DISTANCE OF 206.19 FEET; THENCE N66°10'53"E A DISTANCE OF 206.52 FEET; THENCE S67°35'08"E A DISTANCE OF 173.71 FEET TO THE BEGINNING OF A CURVE HAVING A RADIUS OF 51.00 FEET AND FROM WHICH A RADIAL LINE BEARS N22°24'52"E; THENCE EASTERLY ALONG THE ARC OF SAID CURVE A DISTANCE OF 57.53 FEET (THROUGH AN ANGLE OF 64°37'55"); THENCE N47°46'57"E A DISTANCE OF 52.82 FEET TO THE BEGINNING OF A CURVE HAVING A RADIUS OF 51.00 FEET AND FROM WHICH A RADIAL LINE BEARS N42°13'03"W; THENCE NORTHERLY ALONG THE ARC OF SAID CURVE A DISTANCE OF 45.14 FEET (THROUGH AN ANGLE OF 50°42'28"); THENCE N02°55'31"W A DISTANCE OF 562.93 FEET; THENCE N21°08'31"W A DISTANCE OF 46.24 FEET; THENCE N36°02'24"W A DISTANCE OF 28.60 FEET; THENCE N42°43'23"W A DISTANCE OF 47.67 FEET; THENCE N49°59'33"E A DISTANCE OF 513.16 FEET TO THE BEGINNING OF A CURVE HAVING A RADIUS OF 811.00 FEET AND FROM WHICH A RADIAL LINE BEARS N40°00'27"W; THENCE NORTHEASTERLY ALONG THE ARC OF SAID CURVE A DISTANCE OF 313.64 FEET (THROUGH AN ANGLE OF 22°09'30"); THENCE N27°50'03"E A DISTANCE OF 322.56 FEET; THENCE N70°37'52"E A DISTANCE OF 33.97 FEET TO A NON-TANGENT CURVE HAVING A RADIUS OF 788.86 FEET AND FROM WHICH A RADIAL LINE BEARS N23°25'40"E; THENCE EASTERLY ALONG THE ARC OF SAID CURVE A DISTANCE OF 185.35 FEET (THROUGH AN ANGLE OF 13°27'44"); THENCE S80°02'03"E A DISTANCE OF 281.82 FEET; THENCE N09°57'57"E A DISTANCE OF 50.00 FEET; THENCE N80°02'03"W A DISTANCE OF 78.18 FEET TO A NON-TANGENT CURVE HAVING A RADIUS OF 100.00 FEET AND FROM WHICH A RADIAL LINE BEARS N21°34'51"W; THENCE NORTHERLY ALONG THE ARC OF SAID CURVE A DISTANCE OF 134.34 FEET (THROUGH AN ANGLE OF 76°58'12"); THENCE N08°33'03"W A DISTANCE OF 143.85 FEET; THENCE N19°18'16"W A DISTANCE OF 448.74 FEET; THENCE N07°24'05"W A DISTANCE OF 638.88 FEET TO THE BEGINNING OF A CURVE HAVING A RADIUS OF 197.00 FEET AND FROM WHICH A RADIAL LINE BEARS S82°35'55"W; THENCE NORTHERLY AND WESTERLY ALONG THE ARC OF SAID CURVE A DISTANCE OF 302.50 FEET (THROUGH AN ANGLE OF 87°58'51"); THENCE S84°37'04"W A DISTANCE OF 86.40 FEET; THENCE S69°25'27"W A DISTANCE OF 60.49 FEET; THENCE N02°44'10"E A DISTANCE OF 184.02 FEET TO A POINT ON THE SOUTH RIGHT-OF-WAY LINE OF A 120 FOOT WIDE RIGHT-OF-WAY FOR LAKE WORTH ROAD AS RECORDED IN OFFICIAL RECORD BOOK 5642 AT PAGE 1604 OF THE PUBLIC RECORDS OF SAID PALM BEACH COUNTY, SAID POINT ALSO BEING ON A NON-TANGENT CURVE HAVING A RADIUS OF 2924.79 FEET AND FROM WHICH A RADIAL LINE BEARS N11°11'26"E; THENCE EASTERLY ALONG THE ARC OF SAID CURVE A DISTANCE OF 620.63 FEET (THROUGH AN ANGLE OF 12°09'28"); THENCE CONTINUING ALONG SAID SOUTH LINE, N89°04'59"E A DISTANCE OF 436.46 FEET; THENCE S87°18'19"E A DISTANCE OF 250.51 FEET; THENCE CONTINUING ALONG SAID SOUTH LINE, N89°04'59"E A DISTANCE OF 358.08 FEET; THENCE S44°37'40"E A DISTANCE OF 54.13 FEET TO THE INTERSECTION OF SAID SOUTH LINE AND THE AFORESAID WEST RIGHT-OF-WAY LINE OF STATE ROAD 7; THENCE S01°28'38"W, ALONG SAID WEST LINE, A DISTANCE OF 3756.97 FEET TO THE POINT OF BEGINNING.

THE ABOVE DESCRIBED PARCEL CONTAINS 250.740 ACRES OF LAND, MORE OR LESS. HAVE CAUSED THE SAME TO BE SURVEYED AND PLATTED AS SHOWN HEREON AND DO HEREBY DEDICATE AS FOLLOWS:

1. TRACT N, THE TRACT FOR PRIVATE ROAD PURPOSES, AS SHOWN HEREON IS HEREBY DEDICATED TO WYCLIFFE COMMUNITY ASSOCIATION, INC., A FLORIDA NOT-FOR-PROFIT CORPORATION, ITS SUCCESSORS AND ASSIGNS, FOR INGRESS, EGRESS, UTILITY, WATER, SEWER, DRAINAGE AND OTHER PROPER PURPOSES AND IS THE PERPETUAL MAINTENANCE OBLIGATION OF SAID ASSOCIATION, ITS SUCCESSORS AND ASSIGNS, WITHOUT RECOURSE TO PALM BEACH COUNTY.

2. TRACT R, AS SHOWN HEREON, IS HEREBY DEDICATED TO THE PALM BEACH COUNTY BOARD OF COUNTY COMMISSIONERS FOR THE PERPETUAL USE OF THE PUBLIC FOR PROPER PURPOSES AS ADDITIONAL RIGHT-OF-WAY FOR LAKE WORTH ROAD.

3. TRACT P AND TRACT Q ARE HEREBY RESERVED BY AND SHALL BE THE PERPETUAL MAINTENANCE OBLIGATION OF SUNDIAL JOINT VENTURE, A FLORIDA GENERAL PARTNERSHIP, ITS SUCCESSORS AND ASSIGNS, FOR OPEN SPACE AND OTHER PROPER PURPOSES WITHOUT RECOURSE TO PALM BEACH COUNTY.

4. TRACTS A, B, C, D, AND E, AS SHOWN HEREON ARE HEREBY RESERVED BY SUNDIAL JOINT VENTURE, A FLORIDA GENERAL PARTNERSHIP, ITS SUCCESSORS AND ASSIGNS, FOR RESIDENTIAL HOUSING, RECREATION AND OTHER PROPER PURPOSES AND MUST BE REPLATTED PRIOR TO DEVELOPMENT. SAID TRACTS SHALL BE THE PERPETUAL MAINTENANCE OBLIGATION OF SUNDIAL JOINT VENTURE, A FLORIDA GENERAL PARTNERSHIP, ITS DESIGNATED GRANTEEES AND ASSIGNS, WITHOUT RECOURSE TO PALM BEACH COUNTY, SAID MAINTENANCE OBLIGATION SHALL BE READDRESSSED IN ACCORDANCE WITH THE PALM BEACH COUNTY SUBDIVISION AND PLATTING REGULATION ORDINANCES AT THE TIME OF REPLATTING.

5. TRACTS L-1, L-7, L-8, L-9, L-10, L-11, L-12 AND L-13, THE WATER MANAGEMENT TRACTS, AS SHOWN HEREON, ARE HEREBY DEDICATED TO WYCLIFFE COMMUNITY ASSOCIATION, INC., A FLORIDA NOT-FOR-PROFIT CORPORATION, ITS SUCCESSORS AND ASSIGNS, FOR WATER MANAGEMENT, DRAINAGE EASEMENT AND OTHER PROPER PURPOSES AND ARE THE PERPETUAL MAINTENANCE OBLIGATION OF SAID ASSOCIATION, ITS SUCCESSORS AND ASSIGNS, WITHOUT RECOURSE TO PALM BEACH COUNTY.

6. TRACT L-8P, L-10P, AND L-11P, AS SHOWN HEREON, ARE HEREBY DEDICATED FOR LITTORAL ZONE AND WATER MANAGEMENT PURPOSES TO WYCLIFFE COMMUNITY ASSOCIATION, INC., A FLORIDA NOT-FOR-PROFIT CORPORATION, ITS SUCCESSORS AND ASSIGNS, AND ARE THE PERPETUAL MAINTENANCE OBLIGATION OF SAID ASSOCIATION, ITS SUCCESSORS AND ASSIGNS, WITHOUT RECOURSE TO PALM BEACH COUNTY. IT IS A PUNISHABLE VIOLATION OF PALM BEACH COUNTY LAWS, ORDINANCES, CODES, REGULATIONS AND APPROVALS TO ALTER THE APPROVED SLOPES, CONTOURS OR CROSS SECTIONS, OR TO CHEMICALLY OR PHYSICALLY REMOVE, DAMAGE, DESTROY, CUT OR TRIM ANY PLANTS WITHIN SAID TRACTS WITHOUT THE PRIOR WRITTEN CONSENT OF THE PALM BEACH COUNTY HEALTH UNIT.

7. TRACTS L-1M, L-8M, L-10M, L-13M, W-2, AND W-3, THE CONSERVATION AREAS, AS SHOWN HEREON, ARE HEREBY DECLARED COMMON AREAS. THEY SHALL BE THE PERPETUAL RESPONSIBILITY OF WYCLIFFE COMMUNITY ASSOCIATION, INC., A FLORIDA NOT-FOR-PROFIT CORPORATION, AND MAY IN NO WAY BE ALTERED FROM THEIR NATURAL STATE. ACTIVITIES PROHIBITED WITHIN THE CONSERVATION AREAS INCLUDE, BUT ARE NOT LIMITED TO CONSTRUCTION OR PLACING OF BUILDINGS ON OR ABOVE THE GROUND; DUMPING OR PLACING SOIL OR OTHER SUBSTANCES SUCH AS TRASH; REMOVAL OR DESTRUCTION OF TREES, SHRUBS, OR OTHER VEGETATION; EXCAVATION, DREDGING, OR REMOVAL OF SOIL MATERIAL; DIKING OR FENCING; AND ANY OTHER ACTIVITIES DETRIMENTAL TO DRAINAGE, FLOOD CONTROL, WATER CONSERVATION, EROSION CONTROL, OR FISH AND WILDLIFE HABITAT CONSERVATION OR PRESERVATION.

8. TRACT W-1, THE CONSERVATION AREA, AS SHOWN HEREON, IS HEREBY DECLARED A COMMON AREA. IT SHALL BE THE PERPETUAL RESPONSIBILITY OF WYCLIFFE COMMUNITY ASSOCIATION, INC., A FLORIDA NOT-FOR-PROFIT CORPORATION, AND MAY IN NO WAY BE ALTERED FROM ITS NATURAL STATE. ACTIVITIES PROHIBITED WITHIN THE CONSERVATION AREA INCLUDE, BUT ARE NOT LIMITED TO CONSTRUCTION OR PLACING OF BUILDINGS ON OR ABOVE THE GROUND; DUMPING OR PLACING SOIL OR OTHER SUBSTANCES SUCH AS TRASH; REMOVAL OR DESTRUCTION OF TREES, SHRUBS, OR OTHER VEGETATION; EXCAVATION, DREDGING, OR REMOVAL OF SOIL MATERIAL; DIKING OR FENCING; AND ANY OTHER ACTIVITIES DETRIMENTAL TO DRAINAGE, FLOOD CONTROL, WATER CONSERVATION, EROSION CONTROL, OR FISH AND WILDLIFE HABITAT CONSERVATION OR PRESERVATION.

9. THE RECREATION TRACT, AS SHOWN HEREON, IS HEREBY RESERVED BY, AND SHALL BE THE PERPETUAL MAINTENANCE OBLIGATION OF SUNDIAL JOINT VENTURE, A FLORIDA GENERAL PARTNERSHIP, ITS SUCCESSORS AND ASSIGNS, FOR RECREATION AND OTHER PROPER PURPOSES, WITHOUT RECOURSE TO PALM BEACH COUNTY.

10. THE MAINTENANCE TRACT, AS SHOWN HEREON, IS HEREBY RESERVED BY, AND SHALL BE THE PERPETUAL MAINTENANCE OBLIGATION OF SUNDIAL JOINT VENTURE, A FLORIDA GENERAL PARTNERSHIP, ITS SUCCESSORS AND ASSIGNS, FOR GOLF COURSE MAINTENANCE AND OTHER PROPER PURPOSES, WITHOUT RECOURSE TO PALM BEACH COUNTY.

11. THE MAINTENANCE EASEMENTS, AS SHOWN HEREON ARE HEREBY DEDICATED TO WYCLIFFE COMMUNITY ASSOCIATION, INC., A FLORIDA NOT-FOR-PROFIT CORPORATION, ITS SUCCESSORS AND ASSIGNS, FOR MAINTENANCE AND DRAINAGE EASEMENT PURPOSES AND ARE THE PERPETUAL MAINTENANCE OBLIGATION OF SAID ASSOCIATION, ITS SUCCESSORS AND ASSIGNS, WITHOUT RECOURSE TO PALM BEACH COUNTY.

12. THE UTILITY EASEMENTS AS SHOWN HEREON ARE HEREBY DEDICATED IN PERPETUITY FOR THE CONSTRUCTION AND MAINTENANCE OF UTILITY FACILITIES (INCLUDING WATER, SEWER AND CABLE TELEVISION SYSTEMS).

13. THE 12 FOOT WATER AND SEWER EASEMENT SHOWN HEREON IS HEREBY DEDICATED IN PERPETUITY TO ACME IMPROVEMENT DISTRICT, ITS SUCCESSORS AND ASSIGNS, FOR THE CONSTRUCTION AND MAINTENANCE OF UTILITY FACILITIES.

14. THE DRAINAGE EASEMENTS SHOWN HEREON ARE HEREBY DEDICATED IN PERPETUITY FOR THE CONSTRUCTION AND MAINTENANCE OF DRAINAGE FACILITIES AND SHALL BE THE MAINTENANCE OBLIGATION OF WYCLIFFE COMMUNITY ASSOCIATION, INC., A FLORIDA NOT-FOR-PROFIT CORPORATION, ITS SUCCESSORS AND ASSIGNS, WITHOUT RECOURSE TO PALM BEACH COUNTY.

15. THE LIFT STATION EASEMENTS, AS SHOWN HEREON, ARE HEREBY DEDICATED IN PERPETUITY TO ACME IMPROVEMENT DISTRICT, ITS SUCCESSORS AND ASSIGNS FOR LIFT STATION AND RELATED PURPOSES.

16. THE LIMITED ACCESS EASEMENTS (L.A.E.'S) SHOWN HEREON ARE HEREBY DEDICATED TO THE PALM BEACH COUNTY BOARD OF COUNTY COMMISSIONERS, FOR CONTROL AND JURISDICTION OVER ACCESS RIGHTS.

17. THE ADDITIONAL ROADWAY EASEMENT AS SHOWN HEREON IS HEREBY DEDICATED TO THE PALM BEACH COUNTY BOARD OF COUNTY COMMISSIONERS FOR THE PERPETUAL USE OF THE PUBLIC FOR PROPER PURPOSES.

18. THE BUFFER EASEMENT, AS SHOWN HEREON IS HEREBY DEDICATED TO WYCLIFFE COMMUNITY ASSOCIATION, INC., A FLORIDA NOT-FOR-PROFIT CORPORATION, ITS SUCCESSORS AND ASSIGNS, FOR BUFFER AND OTHER PROPER PURPOSES AND IS THE PERPETUAL MAINTENANCE OBLIGATION OF SAID ASSOCIATION, ITS SUCCESSORS AND ASSIGNS, WITHOUT RECOURSE TO PALM BEACH COUNTY.

19. PALM BEACH COUNTY SHALL HAVE THE RIGHT, BUT NOT THE OBLIGATION, TO MAINTAIN ANY PORTION OF THE DRAINAGE SYSTEM ENCOMPASSED BY THIS PLAT WHICH IS ASSOCIATED WITH THE DRAINAGE OF PUBLIC ROADS.

IN WITNESS WHEREOF, SUNDIAL JOINT VENTURE, A FLORIDA GENERAL PARTNERSHIP, HAS CAUSED THESE PRESENTS TO BE SIGNED BY ITS GENERAL PARTNERS, SUNDIAL ASSOCIATES OF PALM BEACH, A FLORIDA GENERAL PARTNERSHIP, AND CSMB ENTERPRISES OF FLORIDA, INC., A FLORIDA CORPORATION, THIS 29th DAY OF December, 1988.

SUNDIAL JOINT VENTURE
A FLORIDA GENERAL PARTNERSHIP

BY: SUNDIAL ASSOCIATES OF PALM BEACH
A FLORIDA GENERAL PARTNERSHIP,
AS GENERAL PARTNER

BY: TRIPLE J U.S., INC.,
A FLORIDA CORPORATION, AS
GENERAL PARTNER OF
SUNDIAL ASSOCIATES OF PALM BEACH

BY: HARVEY GELLER,
PRESIDENT

AND CSMB ENTERPRISES OF FLORIDA, INC.,
A FLORIDA CORPORATION,
AS GENERAL PARTNER

BY: DAVID E.A. CARSON,
PRESIDENT

ATTEST: *John C. CSAPO*
JOHN C. CSAPO,
SECRETARY

ATTEST: *Peter M. Brestovan*
PETER M. BRESTOVAN,
SECRETARY

ACKNOWLEDGEMENT

STATE OF FLORIDA)
COUNTY OF PALM BEACH)

BEFORE ME PERSONALLY APPEARED HARVEY GELLER AND JOHN C. CSAPO, TO ME WELL KNOWN AND KNOWN TO ME TO BE THE INDIVIDUALS DESCRIBED IN AND WHO EXECUTED THE FOREGOING INSTRUMENT AS PRESIDENT AND SECRETARY OF TRIPLE J U.S., INC., A FLORIDA CORPORATION, AND ACKNOWLEDGED TO AND BEFORE ME THAT THEY EXECUTED SAID INSTRUMENT AS SUCH OFFICERS OF SAID CORPORATION, AND THAT THE SEAL AFFIXED HERETO IS THE CORPORATE SEAL OF SAID CORPORATION AND THAT IT WAS AFFIXED HERETO BY DUE AND REGULAR CORPORATE AUTHORITY, AND THAT SAID INSTRUMENT IS THE FREE ACT AND DEED OF SAID CORPORATIONS.

WITNESS MY HAND AND OFFICIAL SEAL THIS 29th DAY OF December, 1988.

MY COMMISSION EXPIRES: June 18, 1991
M. Elaine Browning
NOTARY PUBLIC

ACKNOWLEDGEMENT

STATE OF CONNECTICUT)
COUNTY OF FAIRFIELD) SS: BRIDGEPORT)

BEFORE ME PERSONALLY APPEARED DAVID E.A. CARSON AND PETER M. BRESTOVAN, TO ME WELL KNOWN AND KNOWN TO ME TO BE THE INDIVIDUALS DESCRIBED IN AND WHO EXECUTED THE FOREGOING INSTRUMENT AS PRESIDENT AND SECRETARY OF CSMB ENTERPRISES OF FLORIDA, INC., A FLORIDA CORPORATION, AND ACKNOWLEDGED TO AND BEFORE ME THAT THEY EXECUTED SAID INSTRUMENT AS SUCH OFFICERS OF SAID CORPORATION, AND THAT THE SEAL AFFIXED HERETO IS THE CORPORATE SEAL OF SAID CORPORATION AND THAT IT WAS AFFIXED HERETO BY DUE AND REGULAR CORPORATE AUTHORITY, AND THAT SAID INSTRUMENT IS THE FREE ACT AND DEED OF SAID CORPORATIONS.

WITNESS MY HAND AND OFFICIAL SEAL THIS 29th DAY OF December, 1988.

MY COMMISSION EXPIRES: March 31, 1992
Joseph P. Strazzulla
NOTARY PUBLIC

MORTGAGEE'S CONSENT

STATE OF FLORIDA)
COUNTY OF ST. LUCIE)

STRAZZULLA BROS. CO., INC., A FLORIDA CORPORATION, HEREBY CERTIFIES THAT IT IS A HOLDER OF A MORTGAGE UPON THE PROPERTY HEREON DESCRIBED AND DOES HEREBY JOIN IN AND CONSENT TO THE DEDICATION OF SAID LANDS BY THE OWNERS THEREOF, AS SHOWN HEREON, AND AGREES THAT ITS MORTGAGE WHICH IS DESCRIBED IN OFFICIAL RECORD BOOK 5678 AT PAGE 817 OF THE PUBLIC RECORDS OF PALM BEACH COUNTY, FLORIDA, SHALL BE SUBORDINATED TO SAID DEDICATION.

IN WITNESS WHEREOF, STRAZZULLA BROS. CO., INC., A FLORIDA CORPORATION, HAS CAUSED THESE PRESENTS TO BE SIGNED BY ITS PRESIDENT AND ATTESTED TO BY ITS SECRETARY, AND ITS CORPORATE SEAL TO BE AFFIXED HERETO BY AND WITH THE AUTHORITY OF ITS BOARD OF DIRECTORS, THIS 30th DAY OF December, 1988.

STRAZZULLA BROS. CO., INC.
ATTEST: *John F. Strazzulla*
JOHN F. STRAZZULLA, SECRETARY
BY: *Joseph P. Strazzulla*
JOSEPH P. STRAZZULLA, PRESIDENT

ACKNOWLEDGEMENT

STATE OF FLORIDA)
COUNTY OF ST. LUCIE)

BEFORE ME PERSONALLY APPEARED JOSEPH P. STRAZZULLA AND JOHN F. STRAZZULLA, TO ME WELL KNOWN AND KNOWN TO ME TO BE THE INDIVIDUALS DESCRIBED IN AND WHO EXECUTED THE FOREGOING INSTRUMENT AS PRESIDENT AND SECRETARY OF STRAZZULLA BROS. CO., INC., A FLORIDA CORPORATION, AND ACKNOWLEDGED TO AND BEFORE ME THAT THEY EXECUTED SAID INSTRUMENT AS SUCH OFFICERS OF SAID CORPORATION, AND THAT THE SEAL AFFIXED HERETO IS THE CORPORATE SEAL OF SAID CORPORATION AND THAT IT WAS AFFIXED HERETO BY DUE AND REGULAR CORPORATE AUTHORITY, AND THAT SAID INSTRUMENT IS THE FREE ACT AND DEED OF SAID CORPORATION.

WITNESS MY HAND AND OFFICIAL SEAL THIS 30th DAY OF December, 1988.

MY COMMISSION EXPIRES: 7-1-92
James A. Pound
NOTARY PUBLIC

0520-001

SEAL TRIPLE J U.S., INC. SEAL NOTARY PUBLIC

SEAL CSMB ENTERPRISES OF FLORIDA, INC. SEAL NOTARY PUBLIC

SEAL STRAZZULLA BROS. CO., INC. SEAL NOTARY PUBLIC

STANLEY/WANTMAN, INC.
2000 LOMBARD STREET, WEST PALM BEACH, FL 33407 (407) 842-7444

DRAWN	S.T.K.	DATE	JAN. 1989
CHECKED	R.B.P.	SCALE	NONE
DRAWING NO.	09736PL		

WYCLIFFE PLAT ONE
PART OF WYCLIFFE GOLF AND COUNTRY CLUB P.U.D.

SUBDIVISION: Wycliffe #1
BOOK 62
PAGE 8
FILED 1988
RIS 86-106
33467